

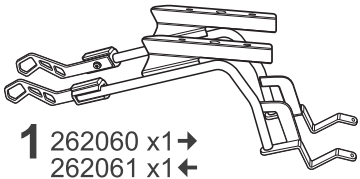
# SHAD

KAWASAKI Z650 '17-

K0Z667IF

**3P**  
SYSTEM

BCN



**1** 262060 x1 →  
262061 x1 ←



**2** 260523 x2  
Ø16 Ø9 x 25



**3** 260900 x2  
Ø16 Ø9 x 36



**4** 303045 x4  
Ø8



**5** 304169 x2  
M8x50 DIN 7380



**6** 304170 x2  
M8x60 DIN 7380



**7** 304178 x2  
M6x60 DIN 912



**8** 302021 x2  
M6



**9** 303017 x6  
Ø6



**10** 260648 x4  
Ø16 Ø9 x 5



**11** 260919 x4



**12** 260917 x2



**13** 260695 x4

## WARNING!

**(GB)** Do not fully tighten the screws until it is ensured that the KIT is correctly attached and aligned. Check tightness every 4 months.

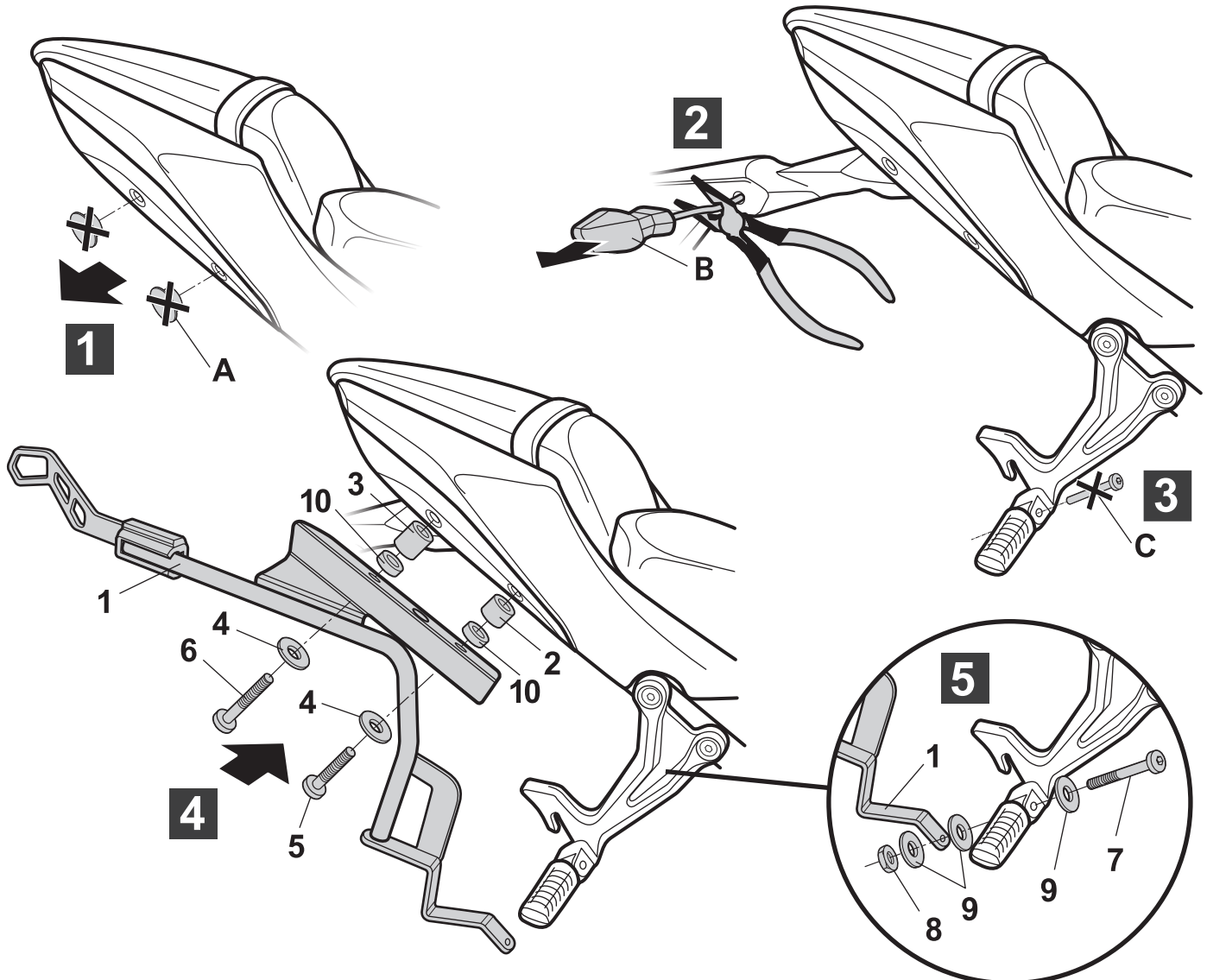
**(E)** No apretar los tornillos del todo hasta asegurarse que el KIT está correctamente colocado y alineado. Repasar apriete cada 4 meses.

**(D)** Ziehen Sie die Schrauben nicht ganz fest, bevor Sie sich nicht vergewissert haben, daß der Bausatz korrekt eingestellt und ausgerichtet ist. Alle 4 Monate Drehmoment überprüfen.

**(I)** Non stringere del tutto le viti fin tanto non si è sicuri che il kit è collocato correttamente e allineato. Controllare il serraggio delle viti ogni 4 mesi.

**(F)** Ne pas serrer les vis avant d'être sûr que le KIT soit correctement positionné et ajusté. Vérifier le serrage des vis tous les 4 mois.

**ATTENTION:** For a full equip assembly, mount the Top master before the 3P system.



**IMPORTANT:** Based on European models. For compatibility with models in other continents, check [www.shad.es](http://www.shad.es)

