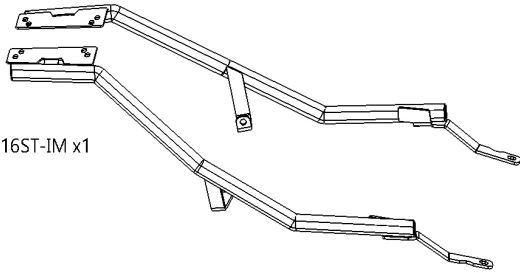


SHAD

YAMAHA AEROX 155 '16-20 KIT TOP Y0AE16ST



1 Y0AE16ST-IM x1



2 EOD028 x4
Ø8



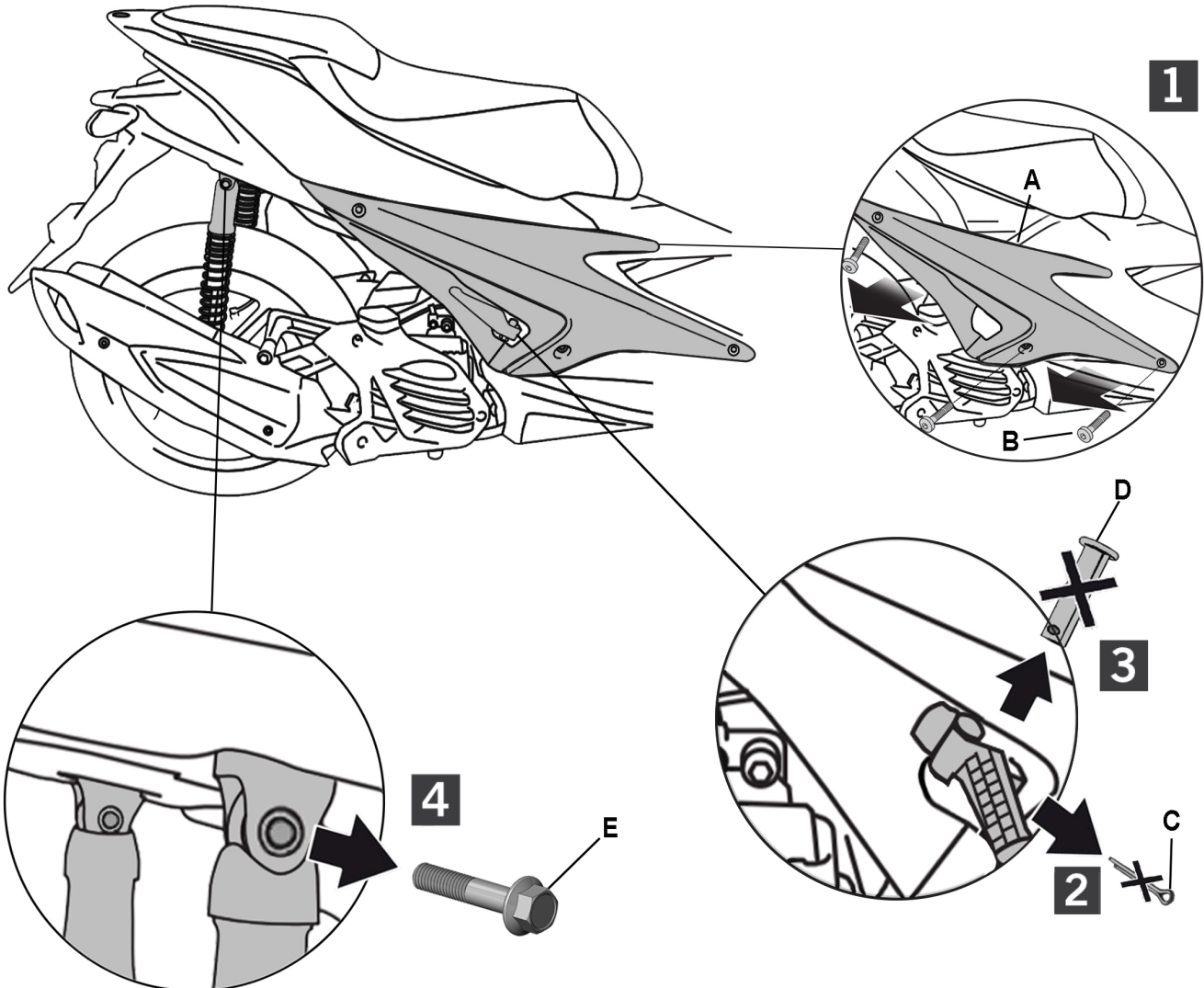
3 EOD035 x2
LN Nut M8



4 EOD017 x2
M8 x 40 DIN 912

WARNING!

- (GB)** Do not fully tighten the screws until it is ensured that the KIT is correctly attached and aligned.
- (E)** No apretar los tornillos del todo hasta asegurarse que el KIT está correctamente colocado y alineado.
- (D)** Ziehen Sie die Schrauben nicht ganz fest, bevor Sie sich nicht vergewissert haben, daß der Bausatz korrekt eingestellt und ausgerichtet ist.
- (I)** Non stringere del tutto le viti fin tanto non si è sicuri che il kit è collocato correttamente e allineato.
- (F)** Ne pas serrer les vis avant d'être sûr que le KIT est correctement monté et ajusté.



www.shad.es
No. 13 Edition 2

*Compatible with small (D1B29PA), medium (D1B40PA), big (D1B481PA) and Alu (D1BTRPA) mounting plates, valid for all SHAD and SHAD TERRA top cases.

! WARNING!



*Install case support
to adjust the symmetrical
of fitting kit position*

